

The Journey



Top Row (left to right):
Larry Szrama, Yacob Negasi, Ah Gee, Saw Hla Set,
Prem Siwakoti, Buddhi Man Rana,
Hadish Measho

Bottom Row (left to right):
Thein Than Oo, Philip Enko, Dillie Siwakoti

JOURNEY'S END REFUGEE SERVICES INC.
2495 Main Street
Suite 317
Buffalo, NY 14214

jersbuffalo.org

v 716-882-4963
f 716-882-4977

DEPARTMENT DIRECTORY
Resettlement & Case Management
716-882-4963 x208

Employment
716-882-4963 x201

Education
716-882-4963 x204

Medical Case Management
716-882-4963 x206

Immigration & Citizenship
716-882-4963 x203

Interpreting
716-882-4963 x207

Volunteers & Co-Sponsorship
716-882-4963 x211

Development
716-882-4963 x205

Sweet Success Story *Journey's End Employment Program*

Hiring refugees is not just good for our clients, but it's good for employers as well.

Landies Candies, located in the Tri-Main Center just down the hall from Journey's End, currently employs twenty people, including eight Journey's End clients. The relationship began about 10 weeks ago when Jeff Ogilvie, Lead Job Developer at Journey's End, approached Larry Szrama about the possibility of hiring our clients for Landies' growing business. Mr. Szrama agreed to hire two recently arrived refugees. The placement was such a success that Landies stopped using temporary employment agencies, choosing to work exclusively with the Journey's End Employment Program instead.

According to Mr. Szrama, the results have been significant. Mr. Szrama indicated that productivity has already increased an amazing 30%. Landies also praised the Employment Program

staff, citing their responsiveness in preparing clients for work at Landies, and ongoing language support and assistance with our clients. Mr. Ogilvie said our relationship with Landies Candies highlights just some of the advantages that employers receive in hiring refugee workers.

Landies Candies was founded in 1983 by Larry and Andy Szrama. The chocolatiers sold their confections through their parents' Bell's Supermarkets and incorporated on their own in 1985. More than 25 years later, Landies continues to sell primarily through supermarkets under both the Landies brand as well as a private label. Easter is their biggest time of year, when they sell over 50 varieties of Easter Chocolate.

For more information on Journey's End Employment Program contact Jeff Ogilvie at 716-882-4963 extension 202 or via email at jogilvie@jersbuffalo.org.

DIRECTOR'S CORNER

MOLLY SHORT

Thank You For A Fantastic Year!

As we come to the end of another amazing, productive, and engaging year I want to take the time to say thank you to all those that have worked so hard to help 411 refugees begin new lives. Staff, volunteers, Board members, and the community have all embraced the tradition of service to welcome the many refugees who have made Buffalo their home over the past year. I especially want to thank you, the supporters and contributors of Journey's End. Your gifts throughout the year allows Journey's End to provide the best services to our newly arriving refugees. Because of you, our staff can fearlessly provide their best in service to Buffalo's newest community members. As we look forward to the holidays, please take a moment to make a final gift to Journey's End in 2010. Your gift is a valuable tool as we work to achieve our purpose, providing refugees with the resources they need to become contributing members of our society.

Stay warm, tell your loved ones how special they are, and enjoy some of the famous Buffalo snow this holiday season.



The Home Again Project

High School Students Set Up Apartments for New Arrivals

Beginning in January, Journey's End will launch *The Home Again Project*. The contest will build awareness about refugees settling in our community, as select schools prepare new homes for arriving families. The students will build campaigns within their schools to fundraise and gather supplies for starter apartments for refugee families arriving in February/March 2011.

The schools will be given specific rules for required set-up items they are to provide, including furniture, food, and a culturally appropriate meal for the arriving family. Schools will also have a strict spending limit to ensure that the apartment is appropriate to the needs of the family. The schools will receive a week's notice to prepare for the house set-up, and then prepare the apartment on a Saturday morning.

At the conclusion of the contest the students will participate in an awards ceremony. The prepared apartments will be rated, and awards given for: Best Overall Set-up, Most Improved, Style

and Design, Practicality, Cultural Appropriateness, and Cost Efficiency. The Home Again Project will be a great opportunity for students to help refugee families receive a great beginning in Buffalo. For more information on *The Home Again Project* contact Ashley Otto at (716) 882-4963 x 218 or via email at aotto@jersbuffalo.org.





Journey's End Director Molly Short has been greatly impressed by the tremendous progress the students are making in a refugee focused ESL program. She said it "confirms our belief that classrooms would be a real benefit to improving the resettlement process for our new arrivals." She went on to say that "the early success of the ESL program has reinforced the need to identify funding to complete the classrooms and fully fund the ELS program."

In discussing the program, Ms. Nichter said she is learning as much from her students as they learn from her. "They make me a better teacher," she said. They are

such a diverse group. I've learned so much from them." Ms. Nichter said in working with our clients she is reminded of the words of Mother Teresa every day as they take small steps to becoming a part of a new emerging Buffalo: "We can do no great things, only small things with great love."

Journey's End Launches ESL Program

Field Based ESL Helps Refugees Learn English and About Our Culture

One of the many objectives of moving to a larger office home was the ability to offer classes to our clients. In our office at the Tri-Main Building, Nicole Nichter and a team of volunteers have launched an immersive, field-based ESL program. Ms. Nichter, a graduate of Buffalo State College and currently enrolled in a Master's in TESOL at Fredonia State, developed the program from scratch to not only teach basic English, but more importantly to provide students with the cultural awareness to make future learning more productive. The class began with 20 students, but quickly grew to more than 40 students. The course is intensive and requires ten volunteers to provide the necessary personalized instruction.

Each week the lessons are focused on field trips designed to replicate activities and situations that refugees can expect to encounter. In addition to the hands-on field-based learning, the lessons also include vocabulary and cultural orientation. The students have made trips to the supermarket, purchased bus passes, and even participated in a Thanksgiving Lunch. With each exercise, students not only come away with a better sense of English, but more importantly, a better sense of our culture.

Have You Sent in Your Annual Appeal Gift?

Remember to Support Journey's End with an Tax Deductible End of the Year Donation!

jersbuffalo.org/donation



Elaine Smyth-Bogumil Retires

A Decade of Serving Refugees

Elaine Smyth-Bogumil came to Journey's End ten years ago after spending more than two decades in the classroom as an elementary and special education teacher. Elaine began as Journey's End Program Assistant, working with every aspect of the resettlement process before becoming the Volunteer Coordinator in 2002. Since assuming the Volunteer post, Elaine has become the face of Journey's End for thousands of community and church-base volunteers. Sadly, this month she will be retiring.

Elaine recalled one of her first assignments after joining Journey's End assisting a family from sub-Saharan Africa. She reminisced about trying to get the family to the Social Security office downtown during the November Blizzard of 2000 that dumped more than two feet of snow in less than 24 hours, shutting down the city for days. It was the family's first taste of winter and snow, and according to Elaine it left quite an impression. Elaine commented on the appearance of the father, who appeared stressed and thin as many refugees do when they arrive. She said she saw him a year later; his face had filled out, and he appeared much more relaxed, looking ten years younger and near unrecognizable. Elaine said watching refugees make this sort of transition again and again was one of the rewarding parts of her job.

Molly Short, Executive Director at Journey's End, commented that "Elaine has long represented the best of Journey's End's commitment to serving refugees. She is a wealth of institutional knowledge and she will be missed." From all of us, "Thank you Elaine."

Presiding Bishop Schori Visits Journey's End

Bishops Meets with Refugees and Co-Sponsors

Presiding Bishop Katharine Jefferts Schori of the Episcopal Church, which encompasses 16 countries, visited Buffalo in late October. Among her stops was a visit to Journey's End where the Bishop met with our clients, staff, and sponsoring churches.

The Presiding Bishop addressed the refugees. "I am grateful for your presence here in the United States. You make our community much richer," she said. "We are a nation of immigrants. We have all come from some place else. The gifts and skills and the history and the culture that you bring make us [a] much more interesting and important community. Thank you for your courage in making this journey."

The participants were grateful for the opportunity to share their stories and their experiences with the presiding bishops. (Portions of this article were adopted and excerpted from *ChurchLinks*).

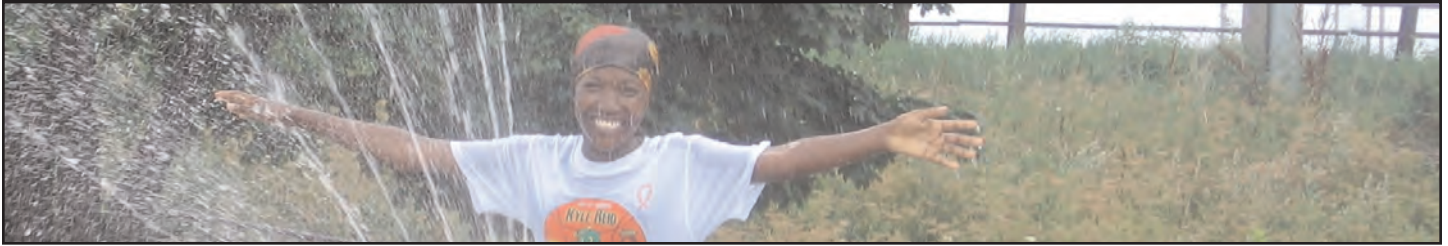


Supplies Needed for New Journey's End

"Welcome House"

- Dining Room Table & Chairs
- Side Tables
- Area Rugs
- Small Bookshelves
- Armchairs
- Lamps
- Small Chests of Drawers
- Curtains

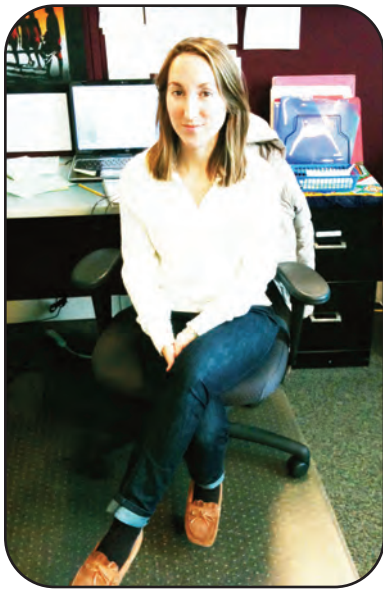
If you can help with any of these items contact Ashley Otto at aotto@jersbuffalo.org or at (716) 822-4963 x218.



Journey's End Welcomes New Staff

Staffing Changes Include Revamped Immigration and Citizenship Department

Journey's End staff continues to grow! We will be hiring a new Director of Finance, Executive Assistant and Volunteer Coordinator in the New Year. Check our website for postings.



Sarah Quintal
Match Grant Coordinator



Hassan Alishaqi
Employment Specialist



Jennifer L. Rizzo, Esq.
Citizenship and Immigration Coordinator

OUR MISSION

Journey's End Refugee Services Inc. is a Christian community-based organization with the mission of welcoming refugees without regard to ethnic origin or creed and to assist them to become healthy, independent, contributing members of the community.

BOARD OF DIRECTORS:

Rev. Barbara Price
Chairwoman

Ann Eisenlord
Vice-Chairwoman

Charles Massey
Secretary

Patricia Potts, Esq.
Treasurer

Board Members

Ernestine Aberle
Jeff Carter
Anne Doebler, Esq.
John Harbison
Laurie Irish Jones, Esq.
Nancy Siegel
Evelyn Swarts
Deacon Thomas Tripp
Awadia Yahia

Administrative Staff

Molly Short
Executive Director

Donna Pepero
Educational Services Coordinator

Meghann Rumpf
Refugee Services Coordinator

Elaine Smyth-Bogumil
Coordinator of Volunteers

Monica Zucco
Interpreting Services Coordinator

Jennifer L. Rizzo
Immigration & Citizenship Services Coordinator

Brian Brown-Cashdollar
Development Coordinator

Executive Assistant

BUFFALO'S FIRST THANKSGIVING

2010

THANKS TO FIDELIS CARE FOR SPONSORING THIS YEAR'S EVENT!





*25th Anniversary
Celebration*





Citizenship and Immigration Services Reopens.

Journey's End is proud to announce the opening of a full service Citizenship and Immigration Department. The program is staffed by an attorney and Journey's End is accredited by Board of Immigration Appeals. In addition to the "affirmative" services we've offered in the past, such as green cards, citizenship applications, and spousal visas among others. Journey's End will now offer "defensive" services including:

- * Asylum Representation
- * Deportation Defense
- * Victims Services

The opening of a full-service program fills a significant void in the community. For more information on available services and associated fees, please contact Jennifer Rizzo at (716) 882-4963 or at jrizzo@jersbuffalo.org.

Former Director Robert Roggie Honored at Journey's End 25th Anniversary (see inside for more 25th Anniversary Photos)



Left to Right Yeny Roggie, Robert Roggie, Board Chair The Very Rev. Barbara Price, Molly Short, Former Board Chair John Harbison.



*Official Affiliate of Church World Service and
Episcopal Migration Ministries*



CURRENT RESIDENT:

Journey's End Refugee Services, Inc.
2495 Main Street
Suite 317
Buffalo, NY 14214



Non-Profit
Organization
Postage Paid
Buffalo, NY
Permit #3978